

Required Inspections:

✓ OK today, but...*

🔍 Defects to look for:

🛑 + 🛠️ Stop and repair now

INSPECT DAILY



Nozzles

⊗ Boots

- **Holes:** bigger than ¼ inch
- **Slits:** bigger than ½ inch
- **Damaged faceplates:** ¼ or more of the circumference

⊗ Latch rings: missing

⊗ Interlocks: defective

⊗ Gasoline leaks

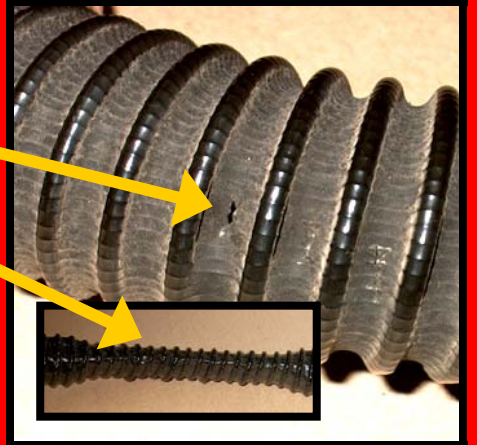


Hoses

⊗ Any cuts or holes

⊗ Kinked or flattened

⊗ Installed backward (fuel flow direction reversed)



INSPECT AFTER FUEL DROP



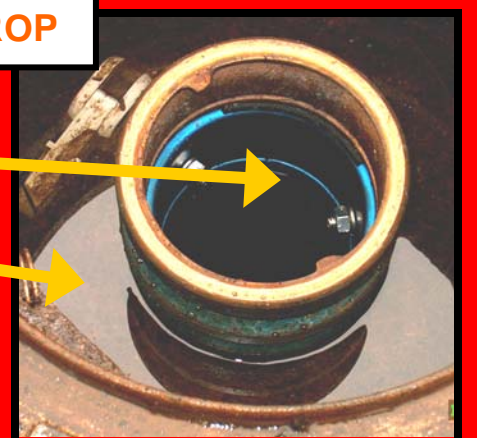
Tanks

⊗ Gaskets: broken or missing

⊗ Spill bucket: more than 1 inch of liquid

⊗ Adapter: loose (non-swivel type)

⊗ Dust cap and cap gasket: missing or damaged



*...they are only going to get worse.



1600 South Second Street
Mount Vernon, WA 98273-5202
ph 360.428.1617
tel 800.622.4627
fax 360.428.1620
www.nwcleanair.org

VAPOR BALANCE
EQUIPMENT INSPECTION GUIDE



1600 South Second Street
 Mount Vernon, WA 98273-5202
 ph 360.428.1617
 tel 800.622.4627
 fax 360.428.1620
 www.nwcleanair.org

GAS STATION SELF-INSPECTION DEFECT TABLES

Tank Defects (Dual-Point Stage 1)

Equipment	Inspection Procedures	Defects
Dust Cap	Visually inspect and try to turn the dust cap on both the fill and vapor risers by hand.	Cap gasket is missing or damaged. Cap is missing or damaged. Cap turns with hand pressure.
Adapter Vapor Riser	Slowly depress poppet and check gasket and poppet alignment.	Poppet is inoperative, not aligned properly, or the gasket is damaged.
Adapter (Non-swivel only)	<i>(This procedure is not required for swivel adapters.)</i> Try to turn the adapters on both the fill and vapor risers by hand.	Adapter turns with hand pressure.
Fill Tube	Visually inspect the fill tube gasket, if clearly visible after removal of dust cap. <i>(Some fill tube assemblies may not allow observation of the fill tube gasket except by a service technician.)</i>	Fill tube gasket is damaged or missing.
Spill Bucket	Visually inspect the liquid level in the spill bucket and the condition of the drain valve.	Liquid level is more than 1 inch. Drain valve is open or leaking vapors.

Pump Defects (Vapor Balance Stage 2)

Equipment	Inspection Procedures	Defects
Nozzle Spout	Pull back the boot to ensure the latch ring is on the spout.	Latch ring is missing.
Nozzle	Visually inspect the boot (bellows) for holes or slits.	No boot hole shall be more than 1/4 inch diameter. No slit shall exceed 1/2 inch in length.
Nozzle	Visually inspect for leaking gasoline.	Visible gasoline leaks.
Nozzle	Visually inspect faceplate for missing or damaged surface area.	1/4 or more of the circumference of the bellows faceplate is damaged or missing.
Nozzles except OPW 111V flow	Compress the boot and note the tension on the trigger. Release the boot and note the tension on the trigger.	If the trigger is loose when the boot is compressed or the trigger is firm when the boot is released, the insertion interlock is defective.
Hose including Whip Hose	Visually inspect the hose for physical condition.	Hose has cuts, holes, is flattened, or kinked, or the fuel flow direction is incorrect (if marked on the hose).